



**REGIONAL SPECIALISED METEOROLOGICAL CENTRE-TROPICAL CYCLONES, NEW DELHI  
TROPICAL WEATHER OUTLOOK**

**DEMS-RSMC TROPICAL CYCLONES NEW DELHI DATED 03.06.2024**

**TROPICAL WEATHER OUTLOOK FOR NORTH INDIAN OCEAN (THE BAY OF BENGAL AND THE ARABIAN SEA) VALID FOR NEXT 168 HOURS ISSUED AT 0600 UTC OF 03.06.2024 BASED ON 0300 UTC OF 03.06.2024.**

**BAY OF BENGAL:**

YESTERDAY'S CYCLONIC OVER EASTCENTRAL BAY OF BENGAL HAS BECOME LESS MARKED AT 0300 UTC OF TODAY, THE 3<sup>RD</sup> JUNE, 2024

YESTERDAY'S CYCLONIC CIRCULATION OVER WESTCENTRAL AND ADJOINING SOUTHWEST BAY OF BENGAL OFF SOUTH COASTAL ANDHRA PRADESH-NORTH TAMIL NADU COASTS LAY OVER THE SAME REGION AT 0300 UTC OF TODAY, THE 3<sup>RD</sup> JUNE, 2024.

SCATTERED LOW AND MEDIUM CLOUDS WITH EMBEDDED INTENSE TO VERY INTENSE CONECTION LAY OVER BAY OF BEGAL, NORTH ANDAMAN SEA & TENASSERIM COAST (MINIMUM CTT MINUS 80-93 DEG CEL) SCATTERED LOW AND MEDIUM CLOUDS WITH EMBEDDED MODERATE TO INTENSE CONVECTION OVER SOUTH ANDAMAN SEA GULF OF MARTABAN & ARAKAN COAST.

**\*PROBABILITY OF CYCLOGENESIS (FORMATION OF DEPRESSION) DURING NEXT 168 HRS:**

24 HOURS	24-48 HOURS	48-72 HOURS	72-96 HOURS	96-120 HOURS	120-144 HOURS	144-168 HOURS
NIL	NIL	NIL	NIL	NIL	NIL	NIL

**\*NOTE: EVERY 24HR FORECAST IS VALID UPTO 0300 UTC (0830 IST) OF NEXT DAY**

**ARABIAN SEA:**

A CYCLONIC CIRCULATION LAY OVER SOUTHEAST ARABIAN SEA AND ADJOINING SOUTH KERALA COAST AT 0300 UTC OF YESTERDAY, THE 2<sup>ND</sup> JUNE, 2024. IT LAY OVER KERALA AND NEIGHBOURHOOD AT 0300 UTC OF TODAY, THE 3<sup>RD</sup> JUNE, 2024.

SCATTERED LOW AND MEDIUM CLOUDS WITH EMBEDDED INTENSE TO VERY INTENSE CONVECTION LAY OVER EASTCENTRAL ARABIAN SEA SOUTHEAST ARABIAN SEA OFF KERALA COAST & LAKSHADWEEP ISLANDS AREA AND COMORIN AREA (MINIMUM CTT MINUS 85-93 DEG CEL). SCATTERED LOW AND MEDIUM CLOUDS WITH EMBEDDED ISOLATED WEAK TO MODERATE CONVECTION LAY OVER REST SOUTH ARABIAN SEA.

**\*PROBABILITY OF CYCLOGENESIS (FORMATION OF DEPRESSION) DURING NEXT 168 HRS:**

24 HOURS	24-48 HOURS	48-72 HOURS	72-96 HOURS	96-120 HOURS	120-144 HOURS	144-168 HOURS
NIL	NIL	NIL	NIL	NIL	NIL	NIL

Cloud distribution: (a) Isolated: <25%, Scattered:25-50%, Broken: 51-75%, Solid:>75%, Convection Intensity: (a) Weak: Cloud Top Temperature (CTT) >-25°C, (b) Moderate: CTT: - 25°C to -40°C, (c) Intense: CTT: - 41°C to -70°C and (d) Very Intense: : Less than -70°C  
**PROBABILITY OF CYCLOGENESIS (FORMATION OF DEPRESSION):NIL: 0%, LOW: 1-33%, , MODERATE: 34-66% AND HIGH: 67-100%**  
 This is a guidance Bulletin for WMO/ESCAP Panel Member countries. Visit respective National websites for Country specific Bulletins

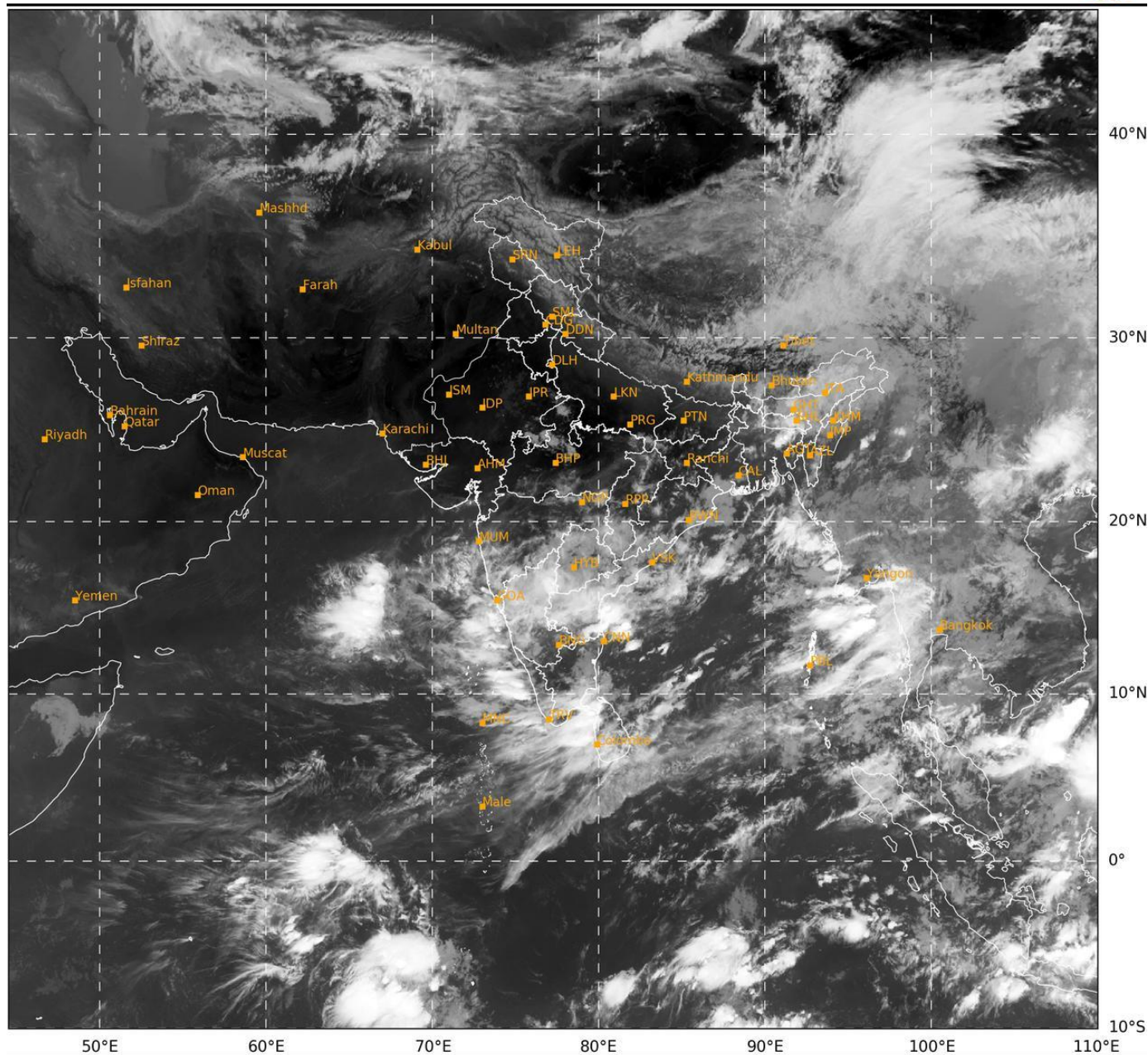
\*NOTE: EVERY 24HR FORECAST IS VALID UPTO 0300 UTC (0830 IST) OF NEXT DAY

**REMARKS:**

NIL

SAT : INSAT-3DR IMG  
IMG\_TIR1 10.8 um  
L1C Mercator

03-06-2024/(0315 to 0342) GMT  
03-06-2024/(0845 to 0912) IST



375

936

IMD, DELHI

Cloud distribution: (a) Isolated: <25%, Scattered:25-50%, Broken: 51-75%, Solid:>75%, Convection Intensity: (a) Weak: Cloud Top Temperature (CTT) >-25°C, (b) Moderate: CTT: - 25°C to -40°C, (c) Intense: CTT: - 41°C to -70°C and (d) Very Intense: : Less than -70°C  
PROBABILITY OF CYCLOGENESIS (FORMATION OF DEPRESSION):NIL: 0%, LOW: 1-33%, , MODERATE: 34-66% AND HIGH: 67-100%  
This is a guidance Bulletin for WMO/ESCAP Panel Member countries. Visit respective National websites for Country specific Bulletins